



MRSS ANNEX CONVERSION

JANUARY 16, 2019

Overview

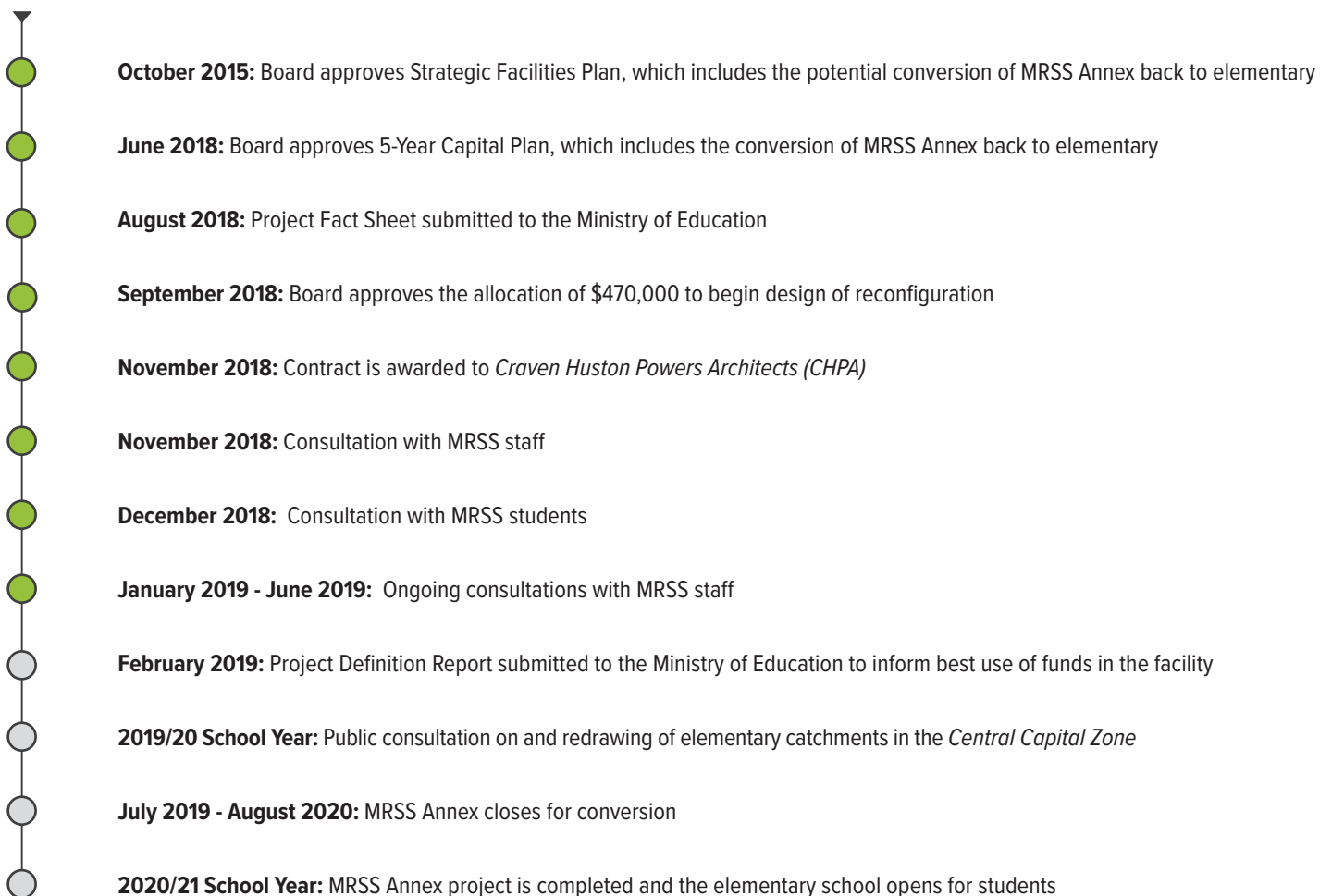
The Maple Ridge - Pitt Meadows School District has been experiencing increasing enrolment growth at the elementary level over the past couple of years. Last year's restoration of the collective agreement language regarding class size and class composition has resulted in a full utilization of elementary school facilities ahead of the projected time line.

Current enrolment in *Central Capital Zone* elementary schools (the zone in which Maple Ridge Secondary is situated) already exceeds the operating capacity of these schools. The school district is forecasting that elementary enrolment will continue to increase over the next several years. The district is not forecasting that overall enrolment increases at the secondary level will exceed available capacity in its facilities over the next 10 years.

In October 2015, the district strategic facilities plan identified the Maple Ridge Secondary Annex and the South Lillooet Centre as two facilities in the *Central Capital Zone* that could be converted to elementary schools to accommodate growth in this area. In September 2017, the renovated South Lillooet campus reopened as the Yennadon elementary annex, temporarily relieving some of the enrolment growth pressures from the *Central Capital Zone* area. The district also added one or more portables at each of the elementary school sites in the *Central Capital Zone*.

Because elementary enrolment continues to increase, the school district must prepare to convert the Maple Ridge Secondary Annex back into an elementary school. It is anticipated that the project will take at least one year to complete.

MRSS Annex Conversion Timeline



Background Information

2015 Strategic Facilities Plan

In October 2015, the Board of Education adopted the *Strategic Facilities Plan*, developed in consultation with stakeholders, educators, the community and the two municipalities of Maple Ridge and Pitt Meadows. The plan outlined district-wide enrolment trends, and also considered more specifically forecasted enrolment in the school district's three key capital zones – the *West Capital Zone*, the *Central Capital Zone*, and the *East Capital Zone*.

The *Strategic Facilities Plan* forecasted that all elementary schools in the *Central Capital Zone* would reach 100% utilization by 2023, and identified South Lillooet Centre and the Maple Ridge Secondary Annex as two facilities in this zone that could be converted to elementary schools to accommodate this growth.

2017 Restoration of Collective Agreement Language

In March 2017, the restoration of collective agreement language on class size and composition created additional pressure on all elementary schools in the district. In September 2017, the school district reopened South Lillooet campus as the Yennadon elementary annex, temporarily relieving some of the enrolment growth pressures from the *Central Capital Zone* area. The school district also added one or more portables at each of the other elementary school sites in this zone.

Enrolment Projections

Current elementary enrolment schools in the *Central Capital Zone* now exceeds the operating capacity of these schools and the school district is forecasting that elementary enrolment will continue to increase over the next several years (figure 1). The *Central Capital Zone* includes Alouette Elementary, Eric Langton Elementary, Glenwood Elementary, Golden Ears Elementary, Harry Hooge Elementary, and Yennadon Elementary.

At the secondary level, the schools that receive students from the *Central Capital Zone* are Maple Ridge Secondary, Westview Secondary, Thomas Haney Secondary and Garibaldi Secondary. Overall enrolment increases at the secondary level are not expected to exceed available capacity in secondary facilities over the next 10 years (figure 2).

Capital Plan Priorities

In June 2018, the Board of Education listed the conversion of the MRSS Secondary Annex back into an elementary school as one of its key priorities in the 2019/20 Capital Plan submission to the Ministry of Education. The cost for this conversion is estimated to be \$4.85 million.

The school district is now in the process of preparing a Project Definition Report for the Ministry of Education. The Project Definition Report will help inform the best use of funds in this facility.

Current and Forecasted Enrolment at MRSS

Maple Ridge Secondary has a nominal (design) capacity of 1,300 students. With the restoration of the collective agreement language, this nominal capacity has been lowered to an operating capacity between 1,193 and 1,224 students.

The school district is projecting that in the 2019/20 school year, MRSS will have 1222 local and international (35) students enrolled. This number includes existing students in Outreach and Journeys (37 combined).

The Maple Ridge Secondary facility - including its two gyms - is in line with ministry guidelines and meets all the requirements for a school population this size.



Download the SD42 Strategic Facilities Plan at www.sd42.ca/board-of-education/strategic-facilities-plan

Portables at elementary sites



Portables already on site at Alouette (1), Glenwood (1), Golden Ears (1), Harry Hooge (2), Eric Langton (2), Yennadon (4 classroom annex)

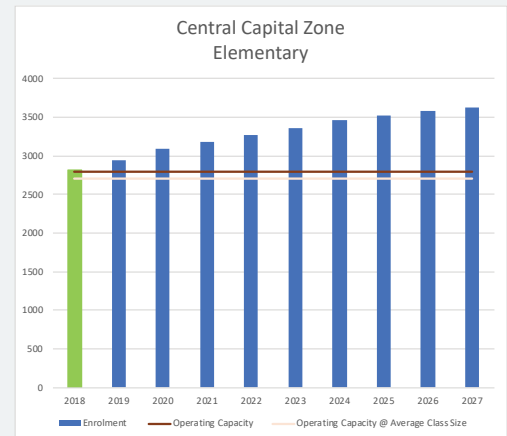


Figure 1: The graph above shows the projected continued enrolment increase at elementary level.

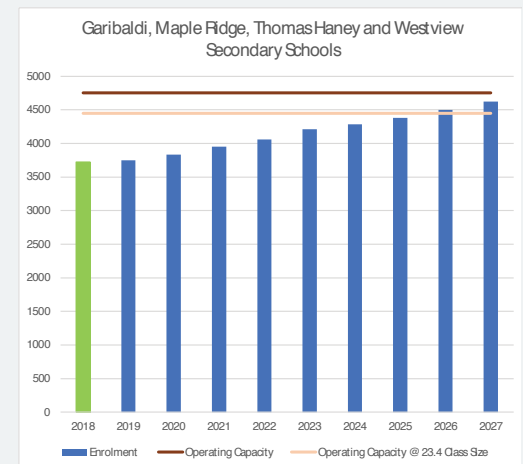


Figure 2: The graph above shows the projected enrolment increase at the secondary level.

The school district will continue managing enrolment at MRSS as it has been doing for the past several years. Enrolment is managed by capping the number of incoming Grade 8 students, the number of international education students, and the number of students registered in the district Outreach program.

As figure 4 shows, by 2020/21 MRSS is forecasted to have approximately 1,183 students enrolled. By the 2022/23 school year, this number is anticipated to decrease further to 1,052 students. This projected number includes the Outreach and International Education student population.

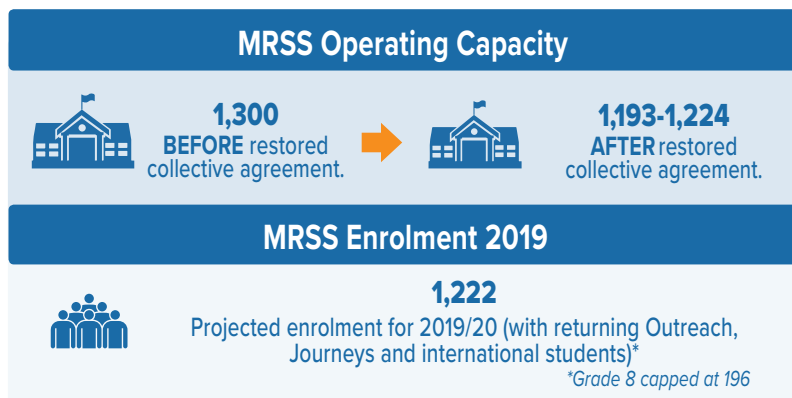


Figure 3: The graphic above shows MRSS operating capacity (before and after the restored collective agreement) and projected enrolment for 2019/20.

MRSS Enrolment 2018 - 2022					
	2018	2019	2020	2021	2022
Grade 8	196	196	196	196	196
Grade 9	241	196	196	196	196
Grade 10	282	241	196	196	196
Grade 11	235	282	241	196	196
Grade 12	224	235	282	241	196
Total	1,178	1,150	1,111	1,025	980
International Ed	103	35	35	35	35
Outreach	110	37	37	37	37
Total Enrolment	1,391	1,222	1,183	1,097	1,052

Figure 4: The graphic above shows current and projected MRSS enrolment, from 2018 to 2022.

Frequently Asked Questions

What will happen to the programs that are currently hosted at the MRSS Annex?

We are confident that with careful planning and scheduling all MRSS programs and extracurricular activities will be able to continue. Where increased enrolment in a program is required to maintain viability or where additional space is needed to maintain existing programming, the school district will step in to assist with facilities renovations and up to three portables.

The gym spaces at the Maple Ridge Secondary facility are in line with Ministry of Education guidelines and meet all the requirements for a school population this size.

Will Maple Ridge Secondary be able to use the annex space during the renovation process?

Our early assessment of the scope of the project is that such partial use of this facility during renovation would present considerable safety concerns for students and staff. Additionally, because significant centralized mechanical upgrades are expected to be a part of this work, there would be no heat and no water in the facility while that work is being undertaken.

Can the school district reopen the Riverside Centre facility for elementary students instead of repurposing the Annex?

The enrolment pressure the school district needs to relieve is north of Lougheed in the *Central Capital Zone*, whereas Riverside Centre is situated in the *West Capital Zone* where the district still has limited capacity at the elementary level. In general, elementary school students attend their neighbourhood school and the district does not provide bussing. Further, our facilities review has indicated that we will be needing to convert Riverside Centre back to an elementary school within the next 10 years to address enrolment pressures at the elementary level in the *West Capital Zone*. For these reasons as well as others, Riverside Centre is not a viable alternative.

Can the school district build a new school in Silver Valley instead?

The process of acquiring land, designing and building a new school takes approximately five to seven years, and the elementary space in the *Central Capital Zone* is needed immediately. Additionally, the Ministry of Education has very tight guidelines for approving funding for building new schools, and requires that all other neighbouring schools be at capacity and closed facilities be converted to school facilities before a new school can be built.

Are there any issues with locating an elementary school in such close proximity to a secondary school?

Situating an elementary school in close proximity to a secondary school is not uncommon and can often offer benefits to both schools. In the Maple Ridge - Pitt Meadows School District, for example, Blue Mountain Elementary is located next to Garibaldi Secondary school, which hosts a thriving StrongStart centre. Similarly, Golden Ears Elementary is situated in close proximity to Arthur Peake Centre and Thomas Haney Secondary school. Any potential challenges with pick-up/drop-off traffic are managed with adjusted start and end times for the elementary school.